

5.5 The Standard and Point-Slope Forms

Standard Form

$$Ax + By = C$$

- A, B, C are real #s
- A & B are not both 0

Standard Form is very useful in finding the x & y intercepts quickly

Remember for y-int
 $x = 0$

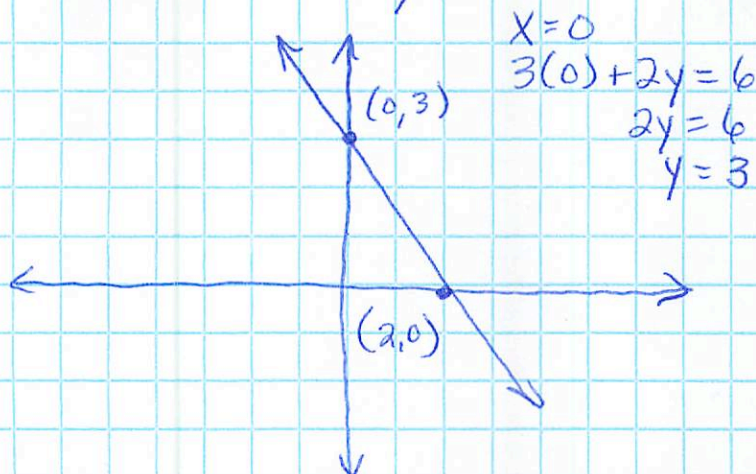
For x-intercept $y = 0$

★ Notice the x-term and y-term are both on the same side

Graphing Standard Form:

1. Convert to $y = mx + b$ form
or
2. Find x and y-intercepts and graph them.

Ex: $3x + 2y = 6$



$$\begin{aligned} x &= 0 \\ 3(0) + 2y &= 6 \\ 2y &= 6 \\ y &= 3 \end{aligned}$$

$$\begin{aligned} y &= 0 \\ 3x + 2(0) &= 6 \\ 3x &= 6 \\ x &= 2 \end{aligned}$$

C.W. Pg 256 (18, 20, 22, 28, 32, 34, 36)

H.W. Pg ~~249~~ (13 ~~33~~ odds) Practice 5-4.
Pg 256 (17-27 odds)

