

## 7.4 Consistent and Inconsistent Systems

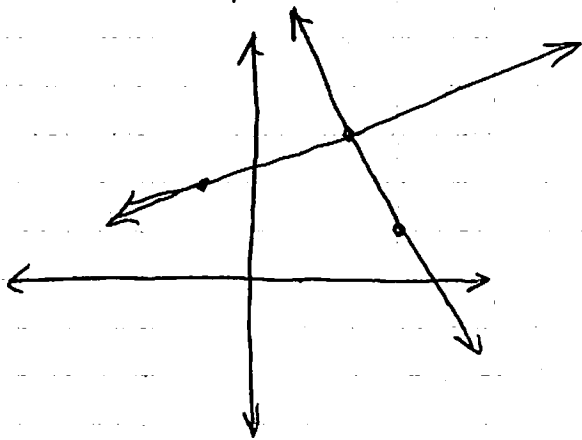
We describe systems as being consistent or inconsistent.

Consistent systems have one or an infinite number of solutions.

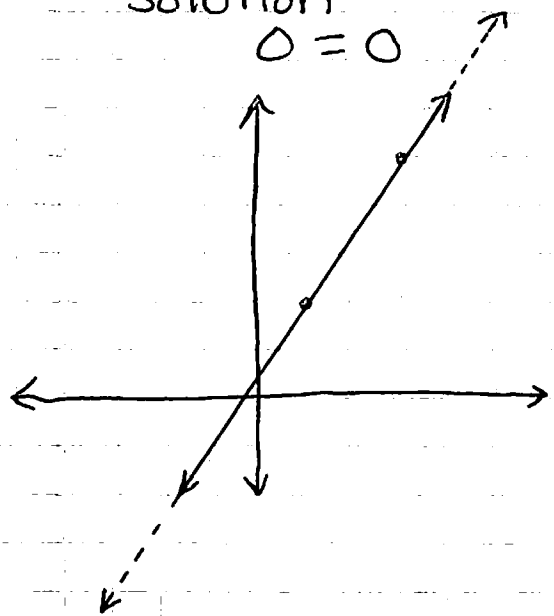
If there is one solution we say they are independent.

If there is an infinite number of solutions, they are dependent.

Consistent Independent  
Solutions look like  
(2,3)

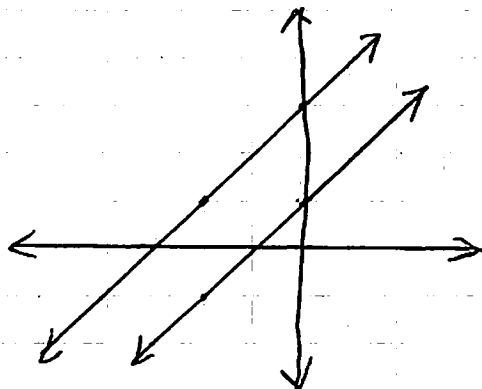


Consistent independent  
Solution  
 $0=0$



Inconsistent Systems have no solution

\* Parallel lines



CW Pg 342  
(11-27 odds)

H.W. Pg 342  
(12-28 Evens)

1. Have the same Slope

2. Answers will be untrue  
Statements like  
 $2=8$

