

Absolute Value - The absolute value of a number is the distance from zero (0) on the number line.

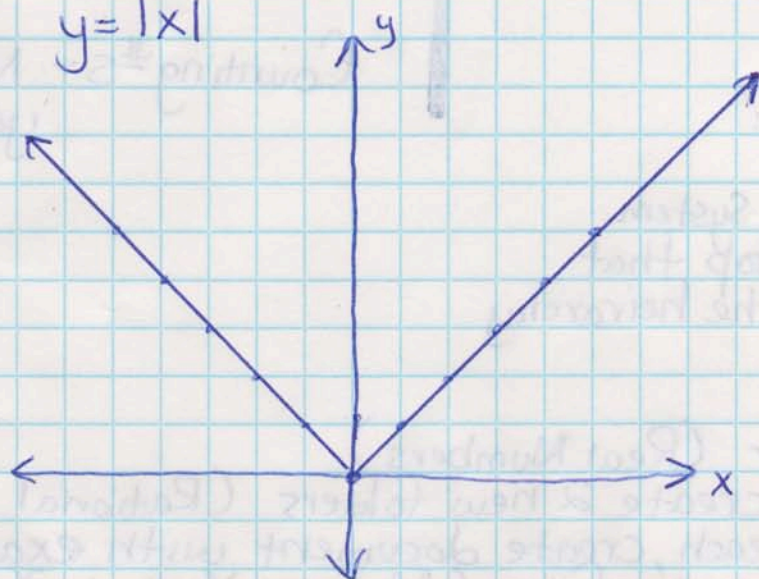
\* Remember that distance can never be negative in Algebra.

We use the symbol  $|x|$

In class activity - What does the Graph of  $|x|$  look like.

1. Graph  $y = |x|$

x	y
-5	5
-4	4
-3	3
-2	2
-1	1
0	0
1	1
2	2
3	3
4	4
5	5



Graph the following equations:

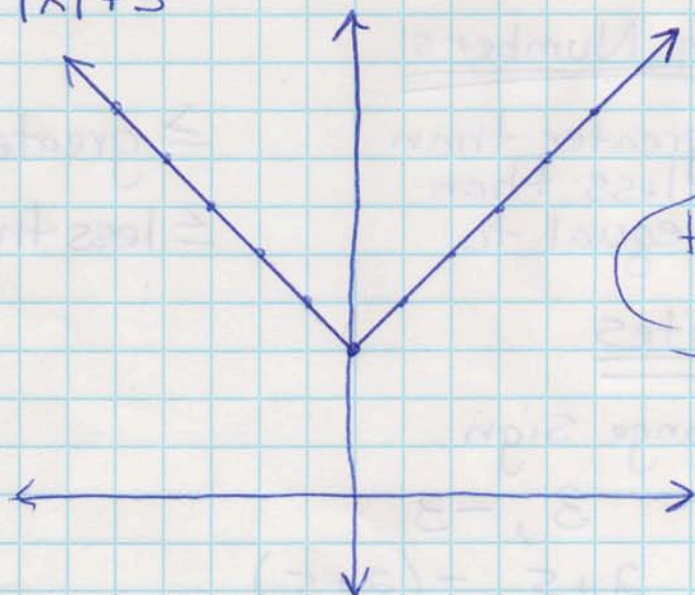
3.  $y = |x| - 2$

4.  $y = |x + 1|$

5.  $y = 3 - |x|$

2. Graph  $y = |x| + 3$

x	y
-5	8
-4	7
-3	6
-2	5
-1	4
0	3
1	4
2	5
3	6
4	7
5	8



Any general observations?

H.W. Pg 59

16-60 Evens